



US 20080136318A1

(19) **United States**

(12) **Patent Application Publication**
Kashiwabara

(10) **Pub. No.: US 2008/0136318 A1**

(43) **Pub. Date: Jun. 12, 2008**

(54) **ORGANIC LIGHT EMITTING DEVICE AND DISPLAY UNIT**

(30) **Foreign Application Priority Data**

Jul. 31, 2006 (JP) 2006-208051

(75) Inventor: **Mitsuhiro Kashiwabara,**
Kanagawa (JP)

Publication Classification

(51) **Int. Cl.**
H01L 27/32 (2006.01)

(52) **U.S. Cl.** **313/504**

Correspondence Address:
SONNENSCHN NATH & ROSENTHAL LLP
P.O. BOX 061080, WACKER DRIVE STATION,
SEARS TOWER
CHICAGO, IL 60606-1080

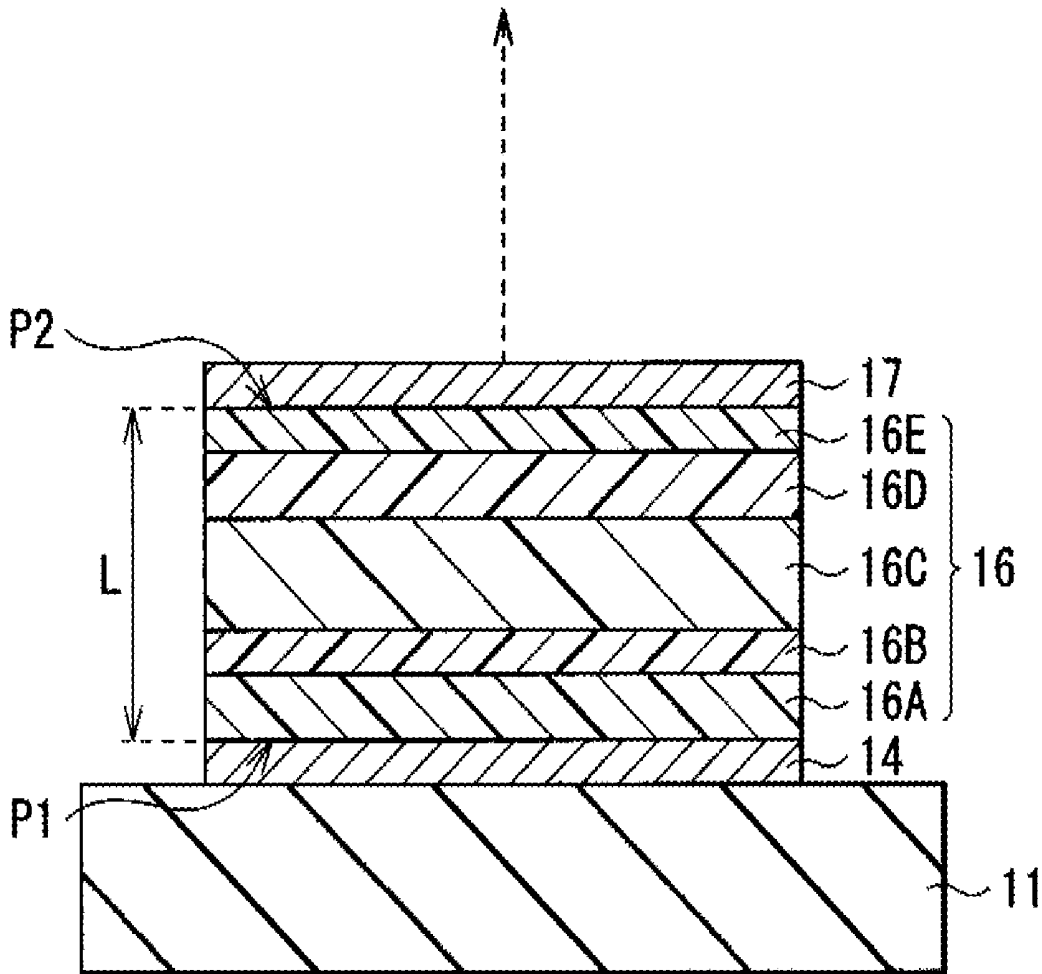
(57) **ABSTRACT**

An organic light emitting device capable of improving the light extraction characteristics while suppressing the driving voltage and improving the luminescent performance, and a display unit using it are provided. The organic light emitting device includes: a lamination structure that includes a cathode, a plurality of layers including a light emitting layer made of an organic material, and an anode including a metal thin film in this order, in which the cathode is reflective and the anode is semi-transparent to light generated in the light emitting layer; and a resonator structure that resonates the light generated in the light emitting layer between the cathode and the anode.

(73) Assignee: **SONY CORPORATION,** Tokyo (JP)

(21) Appl. No.: **11/828,746**

(22) Filed: **Jul. 26, 2007**



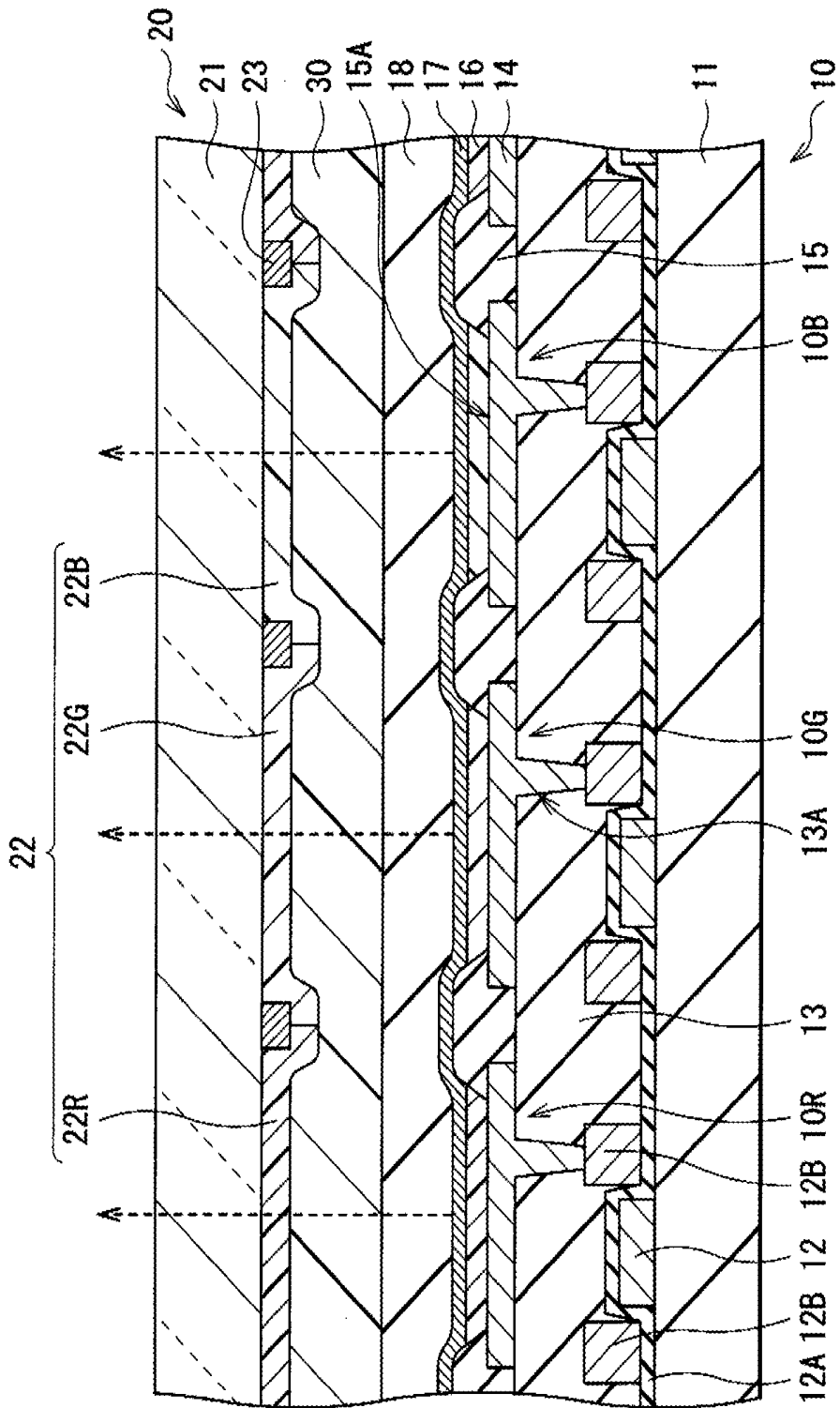


FIG. 1

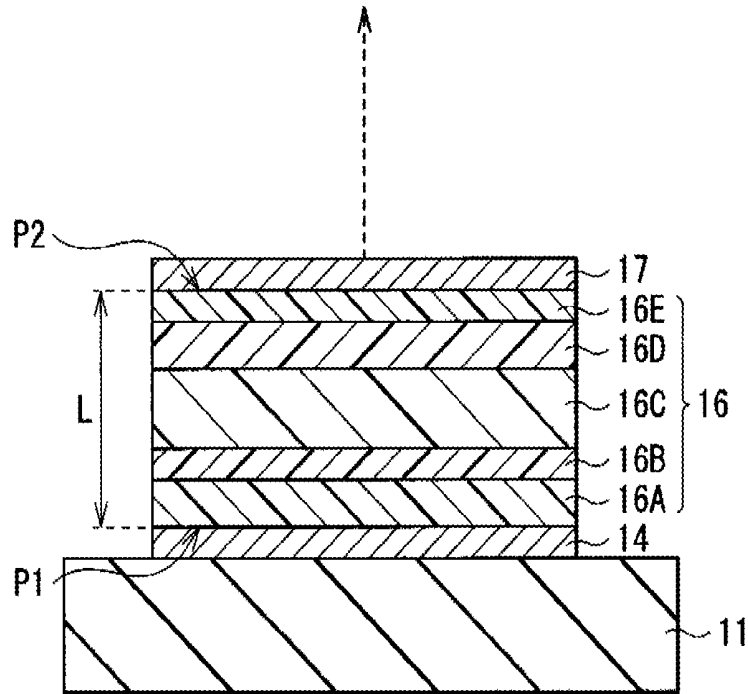


FIG. 2

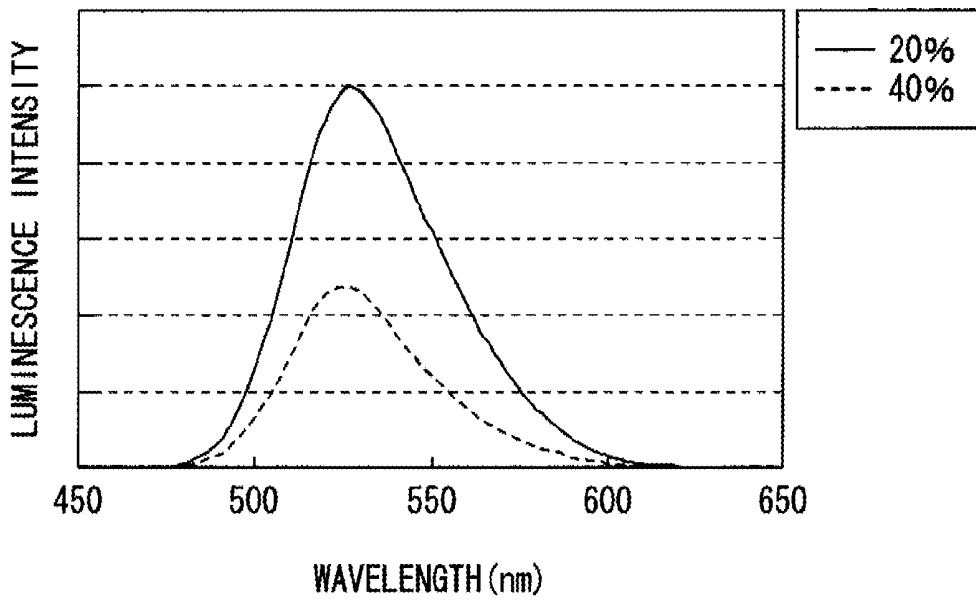


FIG. 3

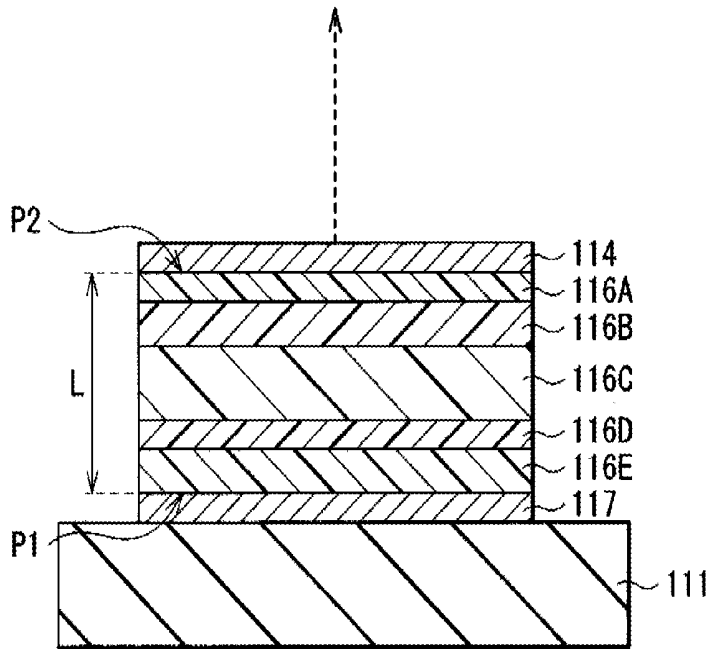


FIG. 4

RELATED ART

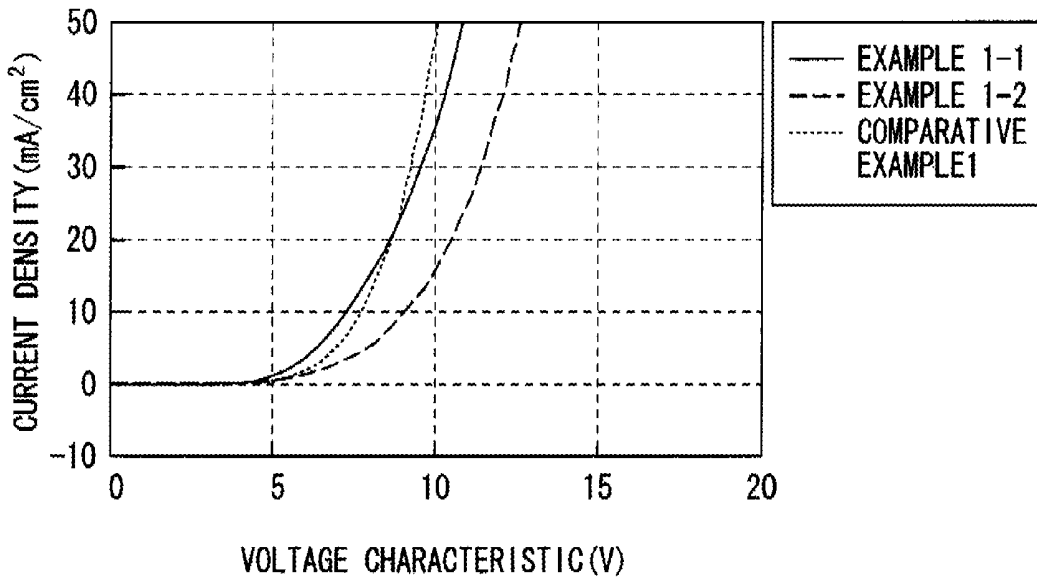


FIG. 5

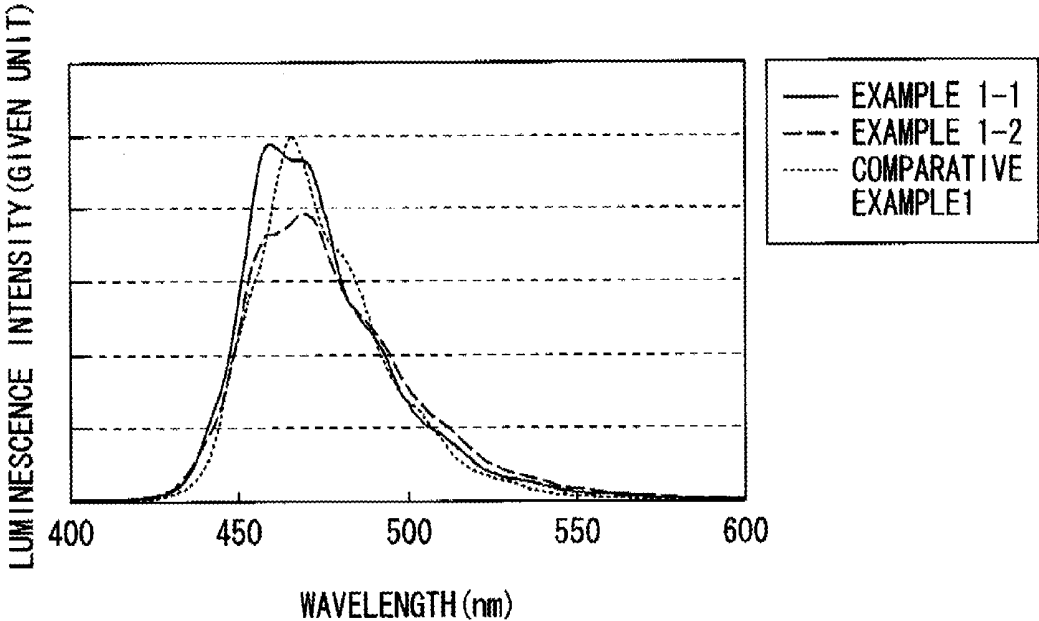


FIG. 6

ORGANIC LIGHT EMITTING DEVICE AND DISPLAY UNIT

CROSS REFERENCES TO RELATED APPLICATIONS

[0001] The present invention contains subject matter related to Japanese Patent Application JP 2006-208051 filed in the Japanese Patent Office on Jul. 31, 2006, the entire contents of which being incorporated herein by reference.

BACKGROUND OF THE INVENTION

[0002] 1. Field of the Invention

[0003] The present invention relates to an organic light emitting device having a light resonator structure and a display unit using the organic light emitting device.

[0004] 2. Description of the Related Art

[0005] In these years, as one of flat panel displays, an organic EL display that displays images by using the organic EL (Electro Luminescence) phenomenon has been noted. Since the organic EL display is a self-luminous type display that displays images by using the foregoing light emitting phenomenon, the organic EL display is superior in terms of the wide view angle, the small power consumption, and the light weight.

[0006] The organic EL device mounted on the organic EL display mainly has a structure in which an organic layer is provided between an anode and a cathode. The organic layer includes a light emitting layer as a light emitting source and a hole-transport layer, an electron transport layer and the like for emitting light from the light emitting layer.

[0007] Specially, in an active matrix drive system organic EL display unit, the top emission structure capable of maintaining a large aperture ratio of a pixel has been developed (for example, refer to Japanese Unexamined Patent Application Publication Nos. 2003-203781, 2003-203783, 2003-323987, 2004-146198, 2004-152542, 2005-032618, 2005-276542, and 2005-530320). Such a structure is a device structure having a light-reflective lower cathode and a light-transparent upper anode, and different from the structure having a light-transparent lower anode and a light-reflective upper cathode that has been developed in the past. The top emission structure is not affected by lowering of the aperture ratio due to a TFT (Thin Film Transistor) and wiring. Therefore, it is thought that the top emission structure can provide an organic EL display unit with high display performance and superior long-term reliability.

[0008] Further, in the top emission structure, as a technique to improve color purity of blue light, green light, and red light, the following technique has been known. In such a technique, in the device structure having a light-reflective lower anode and a light-semi-transparent upper cathode, light generated from the light emitting layer in the organic layer is reflected and resonated (for example, refer to International Publication No. WO 01/039554 and Japanese Unexamined Patent Application Publication No. 10-177896). The device structure of the organic EL device having the light resonant function is generally called "light resonator structure (so-called micro-cavity structure)." In particular, in the organic EL device having the light resonator structure, the light extraction efficiency is improved, that is, the front optical power is increased, and the color purity is improved. Therefore, the

organic EL device having the light resonator structure is suitable for a full color display.

SUMMARY OF THE INVENTION

[0009] In these days, the practicality of the organic EL display has been widely recognized. Accordingly, improvement of the display performance thereof has been increasingly aspired. However, in the past, the luminescent performance of the organic EL device that affects the display performance has not been sufficient yet, and has left much to be improved.

[0010] For example, in the device structure in Japanese Unexamined Patent Application Publication Nos. 2003-203781, 2003-203783, 2003-323987, 2004-146198, 2004-152542, 2005-032618, 2005-276542, and 2005-530320, the technique is based on the premise that an upper anode with the high light transmittance is used. The material of the upper anode is limited to a metal oxide conductor. The metal oxide conductor is generally sputter-deposited. When the metal oxide conductor is directly deposited after the organic layer is formed, the organic layer is largely damaged. Therefore, in the above-mentioned Japanese Unexamined Patent Application Publications, to decrease damage in forming a film, it is considered to use various buffer layers and devise the film forming method. However, the effect thereof is limited, and the reliability and the luminance efficiency decline. In addition, leakage due to sputtered particles is generated. Further, when an additional process is used to decrease the damage, the cost is increased.

[0011] In the case of the device structure having the light resonator structure, in general, the optical distance L between the reflective face and the semi-transparent face satisfies Mathematical formula 1.

$$L=(m-\Phi/2\pi)\lambda/2$$

Mathematical formula 1

[0012] In the formula, L represents the optical distance between the reflective face and the semi-transparent face, m represents an order (0 or a natural number), Φ represents the sum of the phase shift of the reflected light generated on the reflective face and the phase shift of the reflected light generated on the semi-transparent face (rad), and λ represents the peak wavelength of a spectrum of light desired to be extracted from the semi-transparent face side. In Mathematical formula 1, the unit used for L and λ may be common, for example, nm is used.

[0013] Between the reflective face and the semi-transparent face, there are positions (resonant faces) where the extracted luminescence intensity becomes the maximum. The number of the resonant faces is $m+1$. When m is 1 or more, the half bandwidth of the emission spectrum is largest in the case that the light emitting face is on the resonant face closest to the reflective face.

[0014] In such a light resonator structure, the color purity and the luminescence intensity of the front can be increased. Meanwhile, color shift and intensity lowering to the view angle are observed. As m becomes larger, significant view angle dependency is shown. Considering only the visual field characteristics, m is ideally 0. However, in that case, the organic film thickness becomes thin. Therefore, there is a higher possibility that the light emitting characteristics are affected and a defect due to leak is caused.

[0015] To solve the foregoing, for example, it is thought that the following state is effective. That is, for example, m is 1, and the light emitting layer is on the resonant face close to the reflective face.

[0016] As a method to arrange the light emitting layer on the resonant face close to the reflective face, the thickness of electron transport layer may be increased, in the existing device structure including the resonant structure typified by International Publication No. WO 01/039554 and Japanese Unexamined Patent Application Publication No. 10-177896, that is, in the existing device in which a light-reflective lower anode, a hole-transport layer, a light emitting layer, an electron transport layer, and a light-semi-transparent upper cathode are layered in this order. However, when the thickness of the electron transport layer made of Alq_3 , generally used is increased, the driving voltage is extremely increased, leading to increase of the power consumption of the panel.

[0017] Meanwhile, in the active matrix organic EL drive system panel, it is increasingly considered to use an amorphous TFT and an organic TFT, in addition to the low temperature polysilicon TFT used from the past. Depending on the structure of the TFT and the design of the drive circuit, the reflective electrode on the substrate side is preferably a cathode in some cases. However, in the existing organic EL display unit having the light resonator structure, only the case that the reflective electrode on the substrate side is an anode is known. Thus, in some cases, it is not able to address diversified active drive circuits.

[0018] In view of the foregoing, in the invention, it is desirable to provide an organic light emitting device capable of improving the light extraction characteristics while suppressing the driving voltage and improving the luminescent performance, and a display unit using the organic light emitting device.

[0019] According to an embodiment of the invention, there is provided an organic light emitting device including a lamination structure that includes a cathode, a plurality of layers including a light emitting layer made of an organic material, and an anode including a metal thin film in this order, in which the cathode is reflective and the anode is semi-transparent to light generated in the light emitting layer, and a resonator structure that resonates the light generated in the light emitting layer between the cathode and the anode. "Transparent" means that the transmittance of visible light is 10% to 100%. "Reflective" means that the reflectance of visible light is 10% to 100%. "Semi-transparent" means both transparent characteristics and reflective characteristics are included.

[0020] According to an embodiment of the invention, there is provided a display unit including a plurality of organic light emitting devices. The plurality of organic light emitting devices are composed of the foregoing organic light emitting devices of the embodiment of the invention.

[0021] The organic light emitting device according to the embodiment of the invention has the lamination structure in which the reflective cathode, the plurality of layers including the light emitting layer, and the semi-transparent anode including the metal thin film are layered in this order. Therefore, by increasing the thickness of the layer close to the anode in the plurality of layers, the light emitting layer is arranged on the resonance face close to the cathode where the extraction luminescence intensity is highest in the resonator structure. In the result, lowering of extracted light intensity and shift to the short wavelength side depending on the view

angle are suppressed without increasing the driving voltage, and high light extraction efficiency can be obtained.

[0022] In the display unit according to the embodiment of the invention, the organic light emitting device according to the embodiment of the invention is used. Therefore, the display performance is improved.

[0023] The organic light emitting device according to the embodiment of the invention has the lamination structure in which the reflective cathode, the plurality of layers including the light emitting layer, and the semi-transparent anode including the metal thin film are layered; and the resonator structure including the cathode and the anode. Therefore, the light emitting layer in the resonator structure can be optimally positioned without increasing the driving voltage, the high light extraction characteristics can be realized while the view angle dependency is relaxed, and the luminescent performance can be increased. Further, the display unit according to the embodiment of the invention includes the organic light emitting device of the embodiment of the invention with the high luminescent performance. Therefore, the display performance can be improved. In addition, the display unit according to the embodiment of the invention is extremely suitable for addressing the diversified active drive circuit such as an organic TFT.

[0024] Other and further objects, features and advantages of the invention will appear more fully from the following description.

BRIEF DESCRIPTION OF THE DRAWINGS

[0025] FIG. 1 is a cross section showing a structure of a display unit according to an embodiment of the invention;

[0026] FIG. 2 is a cross section showing a structure of an organic light emitting device shown in FIG. 1;

[0027] FIG. 3 is a diagram showing a relation between the absorptance of a metal thin film composing an anode and the emission spectrum intensity;

[0028] FIG. 4 is a cross section showing a structure of an organic light emitting device formed in a comparative example of the invention;

[0029] FIG. 5 is a diagram showing results of examples of the invention; and

[0030] FIG. 6 is a diagram showing results of the examples of the invention.

DETAILED DESCRIPTION OF THE PREFERRED EMBODIMENT

[0031] An embodiment of the invention will be hereinafter described in detail with reference to the drawings.

First Embodiment

[0032] FIG. 1 shows a cross sectional structure of an organic EL display unit according to a first embodiment of the invention. The display unit is used as an ultrathin organic light emitting display in which a driving panel 10 and a sealing panel 20 are oppositely arranged, and the whole areas thereof are bonded together by an adhesive layer 30 made of a thermosetting resin or the like. In the driving panel 10, for example, an organic light emitting device 10R for generating red light, an organic light emitting device 10G for generating green light, and an organic light emitting device 10B for generating blue light are sequentially provided in a state of

matrix on a driving substrate **11** made of an insulating material such as glass, with a TFT **12** and a planarizing film **13** in between.

[0033] The TFT **12** is an active device corresponding to the respective organic light emitting devices **10R**, **10G** and **10B**. The organic light emitting devices **10R**, **10G** and **10B** are driven by active matrix system. A gate electrode (not shown) of the TFT **12** is connected to a not-shown scanning circuit. A source and a drain (either not shown) are connected to a wiring **12B** provided with an interlayer insulating film **12A** made of, for example, silicon oxide or PSG (Phos-Silicate Glass) in between. The wiring **12B** is connected to the source and the drain of the TFT **12** through a not-shown connection hole provided in the interlayer insulating film **12A**, and is used as a signal line. The wiring **12B** is, for example, about 1.0 μm thick, and is made of, for example, aluminum (Al) or an aluminum (Al)-copper (Cu) alloy. The structure of the TFT **12** is not particularly limited. For example, the structure thereof may be bottom gate type or top gate type.

[0034] The planarizing film **13** is a foundation layer for planarizing the surface of the driving substrate **11** formed with the TFT **12** and for uniformizing the film thickness of each layer of the organic light emitting devices **10R**, **10G** and **10B**. The planarizing film **13** is provided with a connection hole **13A** for connecting a cathode **14** of the organic light emitting devices **10R**, **10G** and **10B** to the wiring **12B**.

[0035] In the organic light emitting devices **10R**, **10G** and **10B**, for example, a cathode **14**, an insulating film **15**, a display layer **16** having a plurality of layers including a light emitting layer **16C** made of an organic material, and an anode **17** are layered in this order from the driving substrate **11** side with the TFT **12** and the planarizing film **13** in between. In the display layer **16**, for example, as shown in FIG. 2, an electron injection layer **16A**, an electron transport layer **16B**, a light emitting layer **16C**, a hole-transport layer **16D**, and a hole-injection layer **16E** are layered from the cathode **14** side. On the anode **17**, a protective layer **18** is formed if necessary.

[0036] Further, in the organic light emitting devices **10R**, **10G** and **10B**, the cathode **14** is reflective for light generated in the light emitting layer **16C**, while the anode **17** is semi-transparent. The cathode **14** and the anode **17** compose a resonator structure for resonating the light generated in the light emitting layer **16C**.

[0037] That is, the organic light emitting devices **10R**, **10G** and **10B** have a resonator structure to resonate the light generated in the light emitting layer **16C** and extract the light from a second end **P2** side, where the end face of the cathode **14** on the light emitting layer **16C** side is a first end **P1**, the end face of the anode **17** on the light emitting layer **16C** side is the second end **P2**, and the display layer **16** is a resonant section. When the organic light emitting devices **10R**, **10G** and **10B** have the resonator structure as above, the light generated in the light emitting layer **16C** produces multiple interference and works as a kind of narrow band-pass filter. Thereby, the half bandwidth of the spectrum of the extracted light is reduced, and the color purity can be improved. Outside light entering from the sealing substrate **21** side can be also attenuated by the multiple interference. The reflectance of the outside light in the organic light emitting devices **10R**, **10G** and **10B** can be extremely decreased by combining with a color filter **22** described later, a wave plate, or a polarizing plate (not shown).

[0038] To that end, it is preferable that the optical distance L between the first end (reflective face) **P1** and the second end

(semi-transparent face) **P2** of the resonator satisfy Mathematical formula 2, and a resonant wavelength of the resonator (peak wavelength of the spectrum of the extracted light) corresponds with the peak wavelength of the spectrum of the light desired to be extracted.

$$L = (m - \Phi / (2\pi)) \lambda / 2$$

Mathematical formula 2

[0039] In the formula, L represents the optical distance between the first end **P1** and the second end **P2**, m represents an order (0 or a natural number), Φ represents the sum of the phase shift Φ_1 of the reflected light generated at the first end **P1** and the phase shift Φ_2 of the reflected light generated at the second end **P2** ($\Phi = \Phi_1 + \Phi_2$) (rad), and λ represents the peak wavelength of the spectrum of the light desired to be extracted from the second end **P2** side. In Mathematical formula 2, the unit used for L and λ may be common, for example, nm is used.

[0040] Between the first end **P1** and the second end **P2**, there are positions (resonant faces) where the extracted luminescence intensity becomes the maximum. The number of such positions is $m+1$. When m is 1 or more, the half bandwidth of the emission spectrum is largest in the case that the light emitting layer **16C** is on the resonant face closest to the first end **P1**, the lowering of the intensity of the extracted light depending on the view angle is suppressed, and the short wavelength shift of the extracted light is decreased.

[0041] Though the order m is not particularly limited, m is preferably 1, that is, two resonant faces exist, and the light emitting layer **16C** is arranged on the resonant face close to the first end **P1**. As described above, as m becomes larger, the view angle dependency is increased. Meanwhile, when m is 0, the thickness of the display layer **16** becomes small, and thus shortcomings of light emitting characteristics such as current leakage easily occur.

[0042] As described above, the display unit has the lamination structure in which the cathode **14**, the display layer **16** including the light emitting layer **16C**, and the anode **17** are layered in this order from the driving substrate **11** side. Thereby, in this display unit, by increasing the thickness of the hole-transport layer **16D**, the light emitting layer **16C** can be arranged on the resonant face close to the first end **P1**. Thereby, the light extraction characteristics can be improved without increasing the driving voltage, and the luminescent performance can be improved.

[0043] The cathode **14** becoming the first end **P1** of the resonator structure desirably has the high reflectance as much as possible, in order to increase the luminance efficiency. Further, since the cathode **14** is an electron injection electrode, an electron injection barrier to the display layer **16** is preferably small, and is desirably made of a metal with the small work function. The thickness of the cathode **14** in the lamination direction (hereinafter simply referred to as thickness) is from 30 nm to 2000 nm, and is made of an alloy of an alkali metal or an alkali earth metal such as lithium (Li), magnesium (Mg), and calcium (Ca); and a metal such as silver (Ag), aluminum (Al), and indium (In). Further, the cathode **14** may have a lamination structure including a layer of the foregoing alkali metal or the foregoing alkali earth metal and a layer of the foregoing metal.

[0044] The cathode **14** can be also made of a metal, a metal oxide or the like with the relatively large work function, by using various surface treatments or the after-mentioned electron injection layer **16A**. The cathode **14** may have a lamination structure including, for example, a thin film made of a

metal with the small work function or a dope layer including a metal with the small work function; and a transparent electrode made of a metal oxide such as tin oxide (SnO₂), ITO (Indium tin Oxide), zinc oxide, and titanium oxide.

[0045] Meanwhile, the anode 17 as the second end P2 is desirably designed as a semi-transparent reflective layer so that the total of the reflectance and the transmittance is close to 100% as much as possible and the absorptance is small as much as possible in order to decrease loss due to absorption. Further, the anode 17 should function as an electrode, and should have the conductivity sufficient for supplying electron holes to the organic EL device in the thin film as well.

[0046] As a material of the anode 17, for example, a metal thin film made of an alloy of an alkali metal or an alkali earth metal such as magnesium (Mg), calcium (Ca) and sodium (Na) and silver (Ag) is preferable. In particular, a metal thin film made of an alloy containing magnesium (Mg) and silver (Ag) is more preferable. The metal thin film made of an alloy containing magnesium (Mg) and silver (Ag) is able to be stably vacuum-deposited, even the thickness of thereof is about 5 nm to 10 nm, the organic EL device can be driven. Therefore, such a metal thin film is suitable as an electrode on the light extraction side in the light resonator structure. The anode 17 made of the alloy of magnesium (Mg) and silver (Ag) is able to be simply formed by a film-forming method that does not damage an organic film much such as resistance heating deposition. In the result, in this case, the defect is decreased and light emission with the high reliability can be obtained, compared to the organic EL device of the related art described in Japanese Unexamined Patent Application Publication Nos. 2003-203781, 2003-203783, 2003-323987, 2004-146198, 2004-152542, 2005-032618, 2005-276542, and 2005-530320. Further, the thickness of the metal thin film of the anode 17 is from 5 nm to about 10 nm or to about 20 nm. Therefore, even when a defect is generated in the display layer 16, there is less possibility that the metal material of the anode 17 intrudes in the defect, and thus a non-light emitting defect due to short circuit can be prevented.

[0047] A single metal thin film made of, for example, aluminum (Al), silver (Ag), gold (Au), or copper (Cu) can be used as the anode 17. However, it is difficult to form an ultrathin film with the conductivity capable of driving the organic light emitting devices 10R, 10G and 10B with such a film being about 10 nm thick.

[0048] The absorptance α of the metal thin film composing such an anode 17 preferably satisfies Mathematical formula 3, and is more preferably under 40%. Thereby, the resonator structure can be effectively functioned, and the light extraction efficiency can be increased.

$$\alpha(\%)=100-(R+T)$$

Mathematical formula 3

[0049] In the formula, α represents the light absorptance (%) in the wavelength region from 400 nm to 800 nm of the metal thin film, R represents the reflectance (%) of the metal thin film to the display layer 16 side, and T represents the transmittance (%) of the metal thin film.

[0050] FIG. 3 is a result of calculating the emission spectrums in the case that the absorptance of the metal thin film composing the anode 17 in 550 nm is 20% and 40%. In the case that the absorptance is 20%, the anode 17 is 10 nm thick, and is made of a metal thin film made of an Mg—Ag alloy. As evidenced by FIG. 3, the luminescence intensity in the case that the absorptance is 40% is decreased down to the degree about one half (1/2) of the case that the absorptance is 20%.

That is, when the absorptance of the metal thin film composing the anode 17 is under 40%, the efficiency can be increased, and it is extremely advantageous in order to maintain the display quality.

[0051] The insulating film 15 shown in FIG. 1 is intended to secure insulation properties between the cathode 14 and the anode 17, and to accurately obtain a desired form of light emitting regions in the organic light emitting devices 10R, 10G and 10B. The insulating film 15 is made of, for example, a photosensitive resin such as polyimide. The insulating film 15 is provided with an aperture 15A corresponding to the light emitting regions.

[0052] The electron injection layer 16A shown in FIG. 2 is intended to increase the electron injection efficiency. The electron transport layer 16B is intended to increase the electron transport efficiency to the light emitting layer 16C. The light emitting layer 16C generates light by electron-hole recombination by applying an electric field. The hole-transport layer 16D is intended to increase the electron hole transport efficiency to the light emitting layer 16C. The hole-injection layer 16E is intended to increase the electron hole injection efficiency. Of the foregoing, layers other than the light emitting layer 16C may be provided if necessary. Further, the display layer 16 may have a different structure according to the light emitting color of the organic light emitting devices 10R, 10G and 10B.

[0053] The electron injection layer 16A is preferably made of an alloy of an alkali metal or an alkali earth metal such as lithium (Li), magnesium (Mg), and calcium (Ca) and a metal such as silver (Ag), aluminum (Al), and indium (In), specifically made of an Mg—Ag alloy. Further, the electron injection layer 16A is preferably made of a compound of an alkali metal or an alkali earth metal such as lithium (Li), magnesium (Mg), and calcium (Ca) and halogen such as fluorine and bromine or oxygen, specifically LiF. Further, the electron injection layer 16A may be made of a material in which an alkali metal such as magnesium (Mg) is added to an electron transport organic material such as 8-quinolinole aluminum complex (Alq₃). The electron injection layer 16A may have a structure in which two or more of the foregoing films are layered.

[0054] When the electron injection layer 16A is made of, for example, a halogenide of an alkali metal such as LiF, a halogenide of an alkali earth metal, an oxide of an alkali metal, or an oxide of an alkali earth metal, the thickness of the electron injection layer 16A is preferably from 0.3 nm to 1.3 nm. Thereby, the driving voltage can be decreased, and the luminance efficiency can be increased.

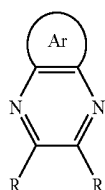
[0055] The electron transport layer 16B is, for example, from 5 nm to 50 nm, and is made of Alq₃.

[0056] The material of the light emitting layer 16C is different according to the light emitting color of the organic light emitting devices 10R, 10G and 10B. The light emitting layer 16C of the organic light emitting device 10R is, for example, 10 nm to 100 nm thick, and is made of a compound in which 40 volume % of 2,6-bis[4-[N-(4-methoxyphenyl)-N-phenyl]aminostyryl]naphthalene-1,5-dicarbonitrile (BSN—BCN) is mixed with Alq₃. The light emitting layer 16C of the organic light emitting device 10G is, for example, 10 nm to 100 nm thick, and is made of a compound in which 3 volume % of coumarin 6 is mixed with Alq₃. The light emitting layer 16C of the organic light emitting device 10B is, for example, 10

nm to 100 nm thick, and is made of a compound in which 1 volume % of perylene is mixed with ADN (9,10-di(2-naphthyl)anthracene).

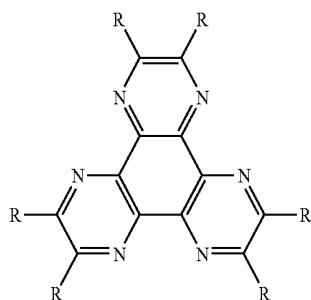
[0057] The hole-transport layer 16D is, for example, 5 nm to 300 nm thick, and is made of bis[(N-naphthyl)-N-phenyl]benzidine (α -NPD).

[0058] The hole injection layer 16E is preferably, for example, 4 nm thick or more, and is preferably made of the pyrazine derivative shown in Chemical formula 1. In addition, an oxide such as titanium oxide, niobium oxide, molybdenum oxide metal is also preferable. The Mg—Ag alloy composing the anode 17 is generally a material used as an electron injection electrode, and the work function thereof is about 3.7 eV, which is small. The foregoing material is preferably used, since thereby the anode 17 made of the Mg—Ag alloy can function as a hole-injection electrode. Further, the anode 17 made of the Mg—Ag alloy can be prevented from contacting with an organic material composing the display layer 16 to generate chemical change, increasing light absorption, and losing the function as the electrode.



Chemical formula 1

[0059] Specially, a hexaazatriphenylene derivative shown in Chemical formula 2 or molybdenum oxide is more preferable. Such materials can be easily formed by resistance heating type vacuum deposition method. In addition, there is no possibility that the conductivity of the anode 17 made of the Mg—Ag alloy is lost due to such materials.



Chemical formula 2

[0060] The protective layer 18 is, for example, 500 nm to 10000 nm thick, and is a passivation film made of a transparent derivative. The protective layer 18 is made of, for example, silicon oxide (SiO_2), silicon nitride (SiN) or the like.

[0061] The sealing panel 20 is located on the anode 17 side of the driving panel 10, and has a sealing substrate 21 that seals the organic light emitting devices 10R, 10G and 10B together with an adhesive layer 30. The sealing substrate 21 is made of a material such as glass transparent to light generated in the organic light emitting devices 10R, 10G and 10B. The sealing substrate 21 is, for example, provided with a color filter 22 and a reflected light absorption film 23 as black

matrix. The color filter 22 and the reflected light absorption film 23 extract the light generated in the organic light emitting devices 10R, 10G and 10B, absorb outside light reflected by the organic light emitting devices 10R, 10G and 10B and the wiring therebetween, and improves the contrast.

[0062] Though the color filter 22 and the reflected light absorption film 23 may be provided on either side of the sealing substrate 21, the color filter 22 and the reflected light absorption film 23 are preferably provided on the driving panel 10 side. Thereby, the color filter 22 and the reflected light absorption film 23 are not exposed on the surface and can be protected by the adhesive layer 30. The color filter 22 has a red filter 22R, a green filter 22G, and a blue filter 22B. The red filter 22R, the green filter 22G, and the blue filter 22B are sequentially arranged according to the organic light emitting devices 10R, 10G and 10B.

[0063] The red filter 22R, the green filter 22G, and the blue filter 22B are, for example, respectively rectangle, and formed with no space therebetween. The red filter 22R, the green filter 22G, and the blue filter 22B are respectively made of a resin mixed with a pigment. The red filter 22R, the green filter 22G, and the blue filter 22B are adjusted so that the light transmittance in the targeted red, green, or blue wavelength band becomes high and the light transmittance in the other wavelength bands becomes low by selecting the pigment.

[0064] The reflected light absorption film 23 is provided along the border between the red filter 22R/the green filter 22G/the blue filter 22B. The reflected light absorption film 23 is made of, for example, a black resin film in which a black pigment is mixed therein and the optical density is 1 or more, or a thin film filter using interference of a thin film. Of the foregoing, the black resin film is preferably used, since such a film can be formed inexpensively and easily. In the thin film filter, for example, one or more thin films made of a metal, a metal nitride, or a metal oxide are layered, and light is attenuated by using the interference of the thin films. As the thin film filter, specifically, a lamination in which chromium and chromium oxide (III)(Cr_2O_3) are alternately layered can be cited.

[0065] The display unit can be manufactured, for example, as follows.

[0066] First, the reflected light absorption film 23 made of the foregoing material is formed on the sealing substrate 21 made of the foregoing material, and patterned into a given shape. Next, the sealing substrate 21 is coated with a material of the red filter 22R by spin coating or the like, the resultant is patterned by photolithography technique and fired, and thereby the red filter 22R is formed. In patterning, the peripheral edge portion of the red filter 22R preferably covers part of the reflected light absorption film 23. It is difficult to pattern with high precision without covering the reflected light absorption film 23. In addition, the portion of the red filter 22R covering the reflected light absorption film 23 does not affect the image display. Subsequently, in the same manner as in the red filter 22R, the blue filter 22B and the green filter 22G are sequentially formed. Thereby, the sealing panel 20 is formed.

[0067] Then, for example, the TFT 12, the interlayer insulating film 12A, and the wiring 12B are formed over the driving substrate 11 made of the foregoing material. The planarizing film 13 made of the foregoing material is formed over the whole area by, for example, spin coat method. Then, the planarizing film 13 is formed into a given shape by providing exposure and development and the connection hole 13A is formed, and fired.

[0068] Next, the cathode **14** made of the foregoing material is formed by, for example, sputtering or deposition. Then, etching is made to form the cathode **14** into a given shape.

[0069] Subsequently, the whole area of the driving substrate **11** is coated with a photosensitive resin, which is formed by, for example, photolithography method to provide the aperture **15A** in the portion corresponding to the cathode **14**. The resultant is fired to form the insulating film **15**.

[0070] After that, corresponding to the aperture **15A** of the insulating film **15**, the electron injection layer **16A**, the electron transport layer **16B**, the light emitting layer **16C**, the hole-transport layer **16D**, the hole-injection layer **16E**, and the anode **17** that have the foregoing thickness and are made of the foregoing material are sequentially formed by, for example, deposition to form the organic light emitting devices **10R**, **10G** and **10B** as shown in FIG. 2. Subsequently, the protective layer **18** is formed on the organic light emitting devices **10R**, **10G** and **10B** if necessary. Thereby, the driving panel **10** is formed.

[0071] After the sealing panel **20** and the driving panel **10** are formed, the adhesive layer **30** made of the foregoing material is formed by coating over the driving substrate **11** on the side where the organic light emitting devices **10R**, **10G** and **10B** are formed. The driving panel **10** and the sealing substrate **20** are bonded to each other with the adhesive layer **30** in between. Consequently, the display unit shown in FIG. 1 is completed.

[0072] In the display unit, when a given voltage is applied between the anode **17** and the cathode **14** in the respective organic light emitting devices **10R**, **10G** and **10B**, a current is injected in the light emitting layer **16C**, electron-hole recombination occurs, and thereby light is generated. The light is multiply reflected between the anode **17** and the cathode **14**, and extracted through the semi-transparent anode **17**, the color filter **22**, and the sealing substrate **21**. In this embodiment, the reflective cathode **14**, the display layer **16** including the light emitting layer **16C**, and the semi-transparent anode **17** including a metal thin film are sequentially layered in this order. Thereby, by increasing the thickness of the hole-transport layer **16D**, the light emitting layer **16C** can be arranged on the resonant face close to the cathode **14** in the resonator structure. Therefore, lowering of the intensity of the extracted light and the short wavelength shift depending on the view angle are suppressed. Thus, the light generated in the light emitting layer **16C** can be extracted with the high extraction efficiency. Further, selection of the material of the hole-transport layer **16D** is more extensive than that of the electron transport material. In addition, the electron hole mobility of the material of the hole-transport layer is relatively higher than the electron mobility of the electron transport material. Therefore, even when the thickness of the hole-transport layer **16D** is increased and the light emitting layer **16D** is arranged on the resonant face close to the first end P1, the driving voltage hardly rises.

[0073] Further, the TFT **12**, the wiring **12B** and the like that affect the aperture ratio are provided on the reflective cathode **14** side, and thereby the high aperture ratio can be maintained. In addition, by increasing the thickness of the hole-transport layer **16D**, coating effect on the substrate by the organic film of the display layer **16** is increased, and thus a defect resulting from defective film-forming on the cathode **14**, attachment of foreign matters thereon and the like, and short circuit resulting from loss of the organic film are prevented.

[0074] Meanwhile, in the past, the light-reflective anode, the hole-transport layer, the light emitting layer, the electron transport layer, and the light-semi-transparent cathode are layered in this order over the substrate. Therefore, to arrange the light emitting layer on the resonant face close to the anode, the electron transport layer is thickened. In the result, the driving voltage is significantly increased, leading to increase of the power consumption of the panel.

[0075] As above, in this embodiment, in the organic light emitting devices **10R**, **10G** and **10B** having a resonator structure, the reflective cathode **14**, the display layer **16** including the light emitting layer **16C**, and the semi-transparent anode **17** are layered in this order. Therefore, it is possible to suppress the view angle dependency without increasing the driving voltage, improve the light extraction characteristics, and improve the luminescent performance. In the result, the display unit including the organic light emitting devices **10R**, **10G** and **10B** with the high luminescent performance can improve the display performance. In particular, the display unit in this embodiment is extremely suitable for a case using an organic TFT or the like as the TFT **12**.

[0076] Further, the thickness of the hole-transport layer **16D** can be increased. Therefore, defects due to short circuit can be decreased, and the reliability can be improved.

[0077] Further, the TFT **12**, the wiring **12B** and the like that affect the aperture ratio are provided on the reflective cathode **14** side, and thereby the high aperture ratio can be maintained.

EXAMPLES

[0078] Further, specific examples of the invention will be described in detail.

Examples 1-1 and 1-2

[0079] The organic light emitting devices **10B** were formed in the same manner as in the foregoing embodiment.

[0080] First, the cathode **14** made of an aluminum-neodymium alloy being 100 nm thick was formed over the driving substrate **11** made of glass. Next, the insulating film **15** made of the foregoing organic insulating material was formed. The insulating film **15** was patterned and thereby the aperture **15A** of 2 mm×2 mm was provided corresponding to the light emitting region to expose the cathode **14**.

[0081] Subsequently, the metal mask having the aperture corresponding to the exposed portion of the cathode **14** was arranged in the vicinity of the driving substrate **11**. With the use of vacuum vapor deposition method under the vacuum of 10^{-4} Pa or less, a co-vapor deposition film of magnesium (Mg) and silver (Ag) (Mg:Ag=10:1) being 2 nm thick and a LiF film being 0.3 nm thick were layered to form the electron injection layer **16A**.

[0082] After that, with the use of vacuum vapor deposition method again, the electron transport layer **16B**, the light emitting layer **16C**, the hole-transport layer **16D**, and the electron injection layer **16E** that were made of the foregoing material were sequentially formed, and thereby the display layer **16** was formed. At that time, as a material of the hole-injection layer **16E**, the hexaazatriphenylene derivative shown in Chemical formula 2 was used in Example 1-1, and molybdenum oxide was used in Example 1-2. The thickness of each layer was set so that the optical distance L between the cathode **14** and the anode **17** satisfied Mathematical formula 2, and the blue light emission was amplified by the resonator structure. That is, the electron transport layer **16B** was 20 nm

thick, the light emitting layer **16C** was 25 nm thick, the hole-transport layer **16D** was 130 nm thick, and the hole-injection layer **16E** was 8 nm thick.

[0083] After the display layer **16** was formed, with the use of vacuum vapor deposition method again, as the anode **17**, a co-vapor deposition film of magnesium (Mg) and silver (Ag) (Mg:Ag=10:1) being 10 nm thick was formed. Consequently, the organic light emitting device **10B** shown in FIG. 2 was obtained.

[0084] Further, a film made of the hexaazatriphenylene derivative shown in Chemical formula 2 being 8 nm thick and an Mg—Ag alloy film (Mg:Ag=10:1) being 10 nm thick were sequentially layered over a quartz glass plate, and the transmittance and the reflectance in the wavelength of 550 nm were examined. In the result, semi-transparent characteristics with the transmittance of 41% and the reflectance of 39% were observed. For molybdenum oxide, examination was made similarly. That is, a film made of molybdenum oxide being 8 nm thick and an Mg—Ag alloy film (Mg:Ag=10:1) being 10 nm thick were sequentially layered over a quartz glass plate, and the transmittance and the reflectance in the wavelength of 550 nm were examined. In the result, semi-transparent characteristics with the transmittance of 46% and the reflectance of 23% were observed.

[0085] As Comparative example 1, an organic light emitting device that has the existing top emission structure in which a reflective anode **117**, an electron injection layer **116E**, a hole-transport layer **116D**, a light emitting layer **116C**, an electron transport layer **116B**, an electron injection layer **116A**, and a semi-transparent cathode **114** are layered in this order from a driving substrate **111** side as shown in FIG. 4, and that generates blue light was formed.

[0086] That is, the anode **117** made of an aluminum-neodymium alloy being 100 nm thick was formed over the driving substrate **111** made of glass. Next, an insulating film (not shown) was formed in the same manner as in Examples 1-1 and 1-2. Subsequently, the hole-injection layer **116E** made of the hexaazatriphenylene derivative shown in Chemical formula 2, the hole-transport layer **116D** made of α -NPD, the light emitting layer **116C** made of a material similar to that of Example 1-1, the electron transport layer **116B** made of Alq₃, and the electron injection layer **116A** made of LiF were sequentially formed. The thickness of each layer was set so that the optical distance L between the anode **117** and the cathode **114** satisfied Mathematical formula 2, and the blue light emission was amplified by the resonator structure. That is, the hole-injection layer **116E** was 8 nm thick, the hole-transport layer **116D** was 140 nm thick, the light emitting layer **116C** was 25 nm thick, the electron transport layer **116B** was 20 nm thick, and the electron injection layer **116A** was 0.3 nm thick. After that, the cathode **114** made of a co-vapor deposition film of magnesium (Mg) and silver (Ag) (Mg:Ag=10:1) being 10 nm thick was formed.

[0087] For the obtained organic light emitting devices of Examples 1-1, 1-2 and Comparative example 1, the current density-voltage characteristics and the emission spectrums where the current density was 10 mA/cm² were examined. The results are shown in FIG. 5 and FIG. 6.

[0088] As evidenced by FIG. 5 and FIG. 6, in Examples 1-1 and 1-2, the electron hole injection characteristics and the luminescence intensity were preferable almost equally to those of Comparative example 1, and the driving voltage was not increased. That is, it was found that in the organic light emitting device **10B** having the resonator structure, when the

reflective cathode **14**, the display layer **16** including the light emitting layer **16C**, and the semi-transparent anode **17** were layered in this order, the organic light emitting device **10B** with the superior light extraction characteristics and the high luminescent performance can be realized without increasing the driving voltage.

[0089] Further, in Example 1-1, both the electron hole injection characteristics and the luminescence intensity were more preferable than in Example 1-2. That is, it was found that when the hole-injection layer **16E** was made of the hexaazatriphenylene derivative shown in Chemical formula 2, the electron hole injection characteristics and the luminescence intensity could be more improved.

Examples 2-1 to 2-4

[0090] The organic light emitting devices **10B** were formed in the same manner as in Example 1-1, except that the thickness of the hole-injection layer **16E** was changed as shown in Table 1. For the obtained organic light emitting devices **10B** of Examples 2-1 to 2-4, the driving voltage and the luminance efficiency at the current density of 10 mA/cm² were examined. The results are shown in Table 1 together.

TABLE 1

	Thickness of hole-injection layer (nm)	Driving voltage at 10 mA/cm ² (V)	Luminance efficiency at 10 mA/cm ² (cd/A)
Example 2-1	2	19.9	0.14
Example 2-2	3	20.0	1.06
Example 2-3	4	6.3	5.77
Example 2-4	8	5.2	5.16

[0091] As evidenced by Table 1, in Examples 2-3 and 2-4 in which the thickness of the hole-injection layer **16E** was 4 nm and 8 nm, the driving voltage was lower and the luminance efficiency was higher than in Examples 2-1 and 2-2 in which the thickness of the hole-injection layer **16E** was 2 nm and 3 nm. That is, it was found that when the thickness of the hole-injection layer **16E** was 4 nm or more, high luminance efficiency could be obtained with the lower driving voltage.

Examples 3-1 to 3-8

[0092] The organic light emitting devices **10B** were formed in the same manner as in Example 1-1, except that the thickness of the LiF film of the electron injection layer **16A** was changed as shown in Table 2. For the obtained organic light emitting devices **10B** of Examples 3-1 to 3-8, the driving voltage and the luminance efficiency at the current density of 10 mA/cm² were examined. The results are shown in Table 2 together.

TABLE 2

	Thickness of LiF film (nm)	Driving voltage at 10 mA/cm ² (V)	Luminance efficiency at 10 mA/cm ² (cd/A)
Example 3-1	0	7.6	4.35
Example 3-2	0.3	6.1	5.19
Example 3-3	0.6	5.3	5.12
Example 3-4	1.0	6.2	5.15
Example 3-5	1.3	6.2	5.24
Example 3-6	1.6	6.7	5.06

TABLE 2-continued

	Thickness of LiF film (nm)	Driving voltage at 10 mA/cm ² (V)	Luminance efficiency at 10 mA/cm ² (cd/A)
Example 3-7	2.0	6.7	4.71
Example 3-8	2.5	7.1	4.62

[0093] As evidenced by Table 2, in Examples 3-2, 3-3, 3-4, and 3-5 in which the thickness of the LiF film of the electron injection layer 16A was 0.3 nm, 0.6 nm, 1.0 nm, and 1.3 nm, respectively, the driving voltage was lower and the luminance efficiency was higher than in Example 3-1 in which the thickness of the LiF film of the electron injection layer 16A was 0 nm and in Examples 3-6, 3-7, and 3-8 in which the thickness of the LiF film of the electron injection layer 16A was 1.6 nm, 2.0 nm, and 2.5 nm, respectively. In particular, in Example 3-3 in which the thickness of the LiF film of the electron injection layer 16A was 0.6 nm, the driving voltage was the minimum, which was preferable in terms of reduction in the power consumption as well. In a general device structure in which the anode, the display layer including a light emitting layer, and the cathode are layered in this order from the driving substrate side (refer to Comparative example 1), the thickness of the electron injection layer made of LiF is most preferably about 0.3 nm. Meanwhile, in these examples, since the cathode 14, the display layer 16, and the anode 17 are layered in this order from the driving substrate 11 side, diffusion of LiF into the electron transport layer 16B made of Alq₃ was small. Therefore, it is thought that increasing the thickness of the LiF film in the electron injection layer 16A more than in the general structure was appropriate in order to improve the electron injection characteristics.

[0094] That is, it was found that when the thickness of the LiF film of the electron injection layer 16A was 0.3 nm to 1.3 nm, high luminance efficiency could be obtained with the lower driving voltage. It is expected that not only in the case of using LiF, but also in the case of using a halogenide of other alkali metal, a halogenide of an alkali earth metal, an oxide of an alkali metal, or an oxide of an alkali earth metal, effects similar to those of these examples may be obtained.

Examples 4-1 to 4-5

[0095] The organic light emitting devices 10B were formed in the same manner as in Example 1-1, except that the structure of the electron injection layer 16A was different from that of Example 1-1. That is, in Example 4-1, the electron injection layer 16A was made of a LiF film being 0.6 nm thick. In Example 4-2, the electron injection layer 16A had a structure in which an Mg—Ag alloy film being 2 nm thick and a LiF film being 0.6 nm thick were layered in this order from the cathode 14 side. In Example 4-3, the electron injection layer 16A had a structure in which an Mg—Ag alloy film being 2 nm thick, a LiF film being 0.6 nm thick, and a mixed film in which 5 volume % of magnesium (Mg) was added to Alq₃ being 5 nm thick were layered in this order from the cathode 14 side. In Example 4-4, the electron injection layer 16A had a structure in which an Mg—Ag alloy film being 2 nm thick, a mixed film in which 5 volume % of magnesium (Mg) was added to Alq₃ being 5 nm thick, and a LiF film being 0.6 nm

thick were layered in this order from the cathode 14 side. In Example 4-5, the electron injection layer 16A had a structure in which an Mg—Ag alloy film being 2 nm thick and a mixed film in which 5 volume % of magnesium (Mg) was added to Alq₃ being 5 nm thick were layered in this order from the cathode 14 side. The thickness of the electron transport layer 16B was 20 nm in Examples 4-1 and 4-2, and 15 nm in Examples 4-3 to 4-5.

[0096] For the obtained organic light emitting devices 10B of Examples 4-1 to 4-5, the driving voltage and the luminance efficiency at the current density of 10 mA/cm² were examined. The results are shown in Table 3 together.

TABLE 3

	Structure of electron injection layer	Driving voltage at 10 mA/cm ² (V)	Luminance efficiency at 10 mA/cm ² (cd/A)
Example 4-1	LiF 0.6 nm	13.1	2.44
Example 4-2	Mg—Ag 2 nm/LiF 0.6 nm	6.5	4.70
Example 4-3	Mg—Ag 2 nm/LiF 0.6 nm/ Alq ₃ + Mg (5%) 5 nm	5.2	4.53
Example 4-4	Mg—Ag 2 nm/Alq ₃ + Mg (5%) 5 nm/LiF 0.6 nm	5.1	4.22
Example 4-5	Mg—Ag 2 nm/Alq ₃ + Mg (5%) 5 nm	6.8	3.53

[0097] As evidenced by Table 3, in Examples 4-2 to 4-5 in which the electron injection layer 16A had a lamination structure including the Mg—Ag alloy film, the driving voltage was lower and the luminance efficiency was higher than in Example 4-1 in which the electron injection layer 16A was made of only the LiF film and did not include the Mg—Ag alloy film. In particular, in Examples 4-3 and 4-4 in which the electron injection layer 16A had the lamination structure including the Mg—Ag alloy film, the mixed film in which 5 volume % of magnesium (Mg) was added to Alq₃, and the LiF film, both the driving voltage and the luminance efficiency were favorable. That is, it was found that when the electron injection layer 16A was made of the Mg—Ag alloy, high luminance efficiency could be obtained with the lower driving voltage. In addition, it was found that when the electron injection layer 16A was made of a material in which 5 volume % of magnesium (Mg) was added to Alq₃, high luminance efficiency could be obtained with the further lower driving voltage.

[0098] While the invention has been described with reference to the embodiment and the examples, the invention is not limited to the foregoing embodiment and the foregoing examples, and various modifications may be made. For example, the material, the thickness, the film-forming method, the film-forming conditions and the like of each layer are not limited to those described in the foregoing embodiment, but other material, other thickness, other film-forming method, and other film-forming conditions may be adopted. For example, the driving substrate 11 may be made of silicon (Si) or a plastic instead of glass. Further, the driving substrate 11 is not necessarily the TFT substrate.

[0099] Further, the invention is not limited to the active matrix drive system display unit, but can be also applied to the simple matrix drive system display unit.

[0100] In addition, in the foregoing embodiment and the foregoing examples, the structure of the organic light emitting devices 10R, 10G and 10B has been specifically described. However it is not necessary to provide all layers such as the protective layer 18, and other layer may be further provided. For example, the cathode 14 can have two-layer structure in which a transparent conductive film is layered on a dielectric multilayer film or a reflective film such as Al. In this case, the end face of the reflective film on the light emitting layer side forms the end of a resonant section, and the transparent conductive film forms part of the resonant section.

[0101] Further, in the foregoing embodiment and the foregoing examples, the description has been given of the case that the organic light emitting devices 10R, 10G and 10B have the resonator structure to resonate the light generated in the light emitting layer 16C and extract the light from the second end P2 side, where the end face of the cathode 14 on the light emitting layer 16C side is the first end P1, the end face of the anode 17 on the light emitting layer 16C side is the second end P2, and the display layer 16 is the resonant section. However, the first end P1 and the second end P2 may be formed on the interface between layers made of two types of materials with the refractive index different from each other. For example, in the foregoing embodiment and the foregoing examples, the description has been given of the case that the anode 17 is made of the semi-transparent metal thin film. However, the anode 17 may have a structure in which a semi-transparent metal thin film and a transparent electrode are sequentially layered from the anode 14 side. The transparent electrode is intended to decrease the electric resistance of the semi-transparent metal thin film, and is made of a conductive material having translucency sufficient for the light generated in the light emitting layer. As a material of the transparent electrode, for example, ITO, or a compound containing indium, zinc (Zn), and oxygen is preferable. Thereby, even when film forming is made at the room temperatures, favorable conductivity can be obtained. The thickness of the transparent electrode can be, for example, from 30 nm to 1000 nm. In this case, a resonator structure in which the semi-transparent metal thin film is used as one end, the other end is provided in the position facing the semi-transparent metal thin film with the transparent electrode in between, and the transparent electrode is used as a resonant section. Further, it is preferable that such a resonator structure is provided, the organic light emitting devices 10R, 10G and 10B are covered with a protective film, and the protective film is made of a material having the refractive index almost the same as that of the material of the transparent electrode. Thus, the protective film can become part of the resonant section.

[0102] In addition, the invention can be also applied to a case in which the anode 17 is composed of a transparent electrode, the reflectance of the end face of the transparent electrode on the opposite side of the display layer 16 is large, and a resonator structure in which the end face of the cathode 14 on the light emitting layer 16C side is the first end, and the end face of the transparent electrode on the opposite side of the display layer 16 is the second end. For example, it is possible that the transparent electrode is contacted with the air layer, the reflectance of the interface between the transparent electrode and the air layer is large, and the interface is used as the second end. Otherwise, it is possible that the reflectance of the interface with the adhesive layer is large, and the interface is used as the second end. Otherwise, it is possible that the organic light emitting devices 10R, 10G and

10B are covered with a protective film, the reflectance of the interface with the protective layer is large, and the interface is used as the second end.

[0103] It should be understood by those skilled in the art that various modifications, combinations, sub-combinations and alternations may occur depending on design requirements and other factors insofar as they are or the equivalents thereof.

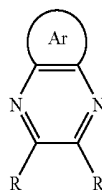
What is claimed is:

1. An organic light emitting device comprising:

a lamination structure that includes a cathode, a plurality of layers including a light emitting layer made of an organic material, and an anode including a metal thin film in this order, in which the cathode is reflective and the anode is semi-transparent to light generated in the light emitting layer; and

a resonator structure that resonates the light generated in the light emitting layer between the cathode and the anode.

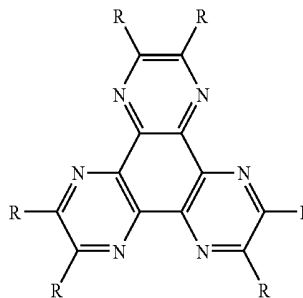
2. The organic light emitting device according to claim 1, wherein a layer contacting with the anode in the plurality of layers contains a pyrazine derivative shown in Chemical formula 1.



Chemical formula 1

where Ar represents an aryl group, and R represents an alkyl group, an alkyloxy group, or a dialkyl amine group with a hydrogen and carbon number of 1 to 10; F; Cl; Br; I; or CN.

3. The organic light emitting device according to claim 1, wherein a layer contacting with the anode in the plurality of layers contains a hexaazatriphenylene derivative shown in Chemical formula 2.



Chemical formula 2

where R represents an alkyl group, an alkyloxy group, or a dialkyl amine group with a hydrogen and carbon number of 1 to 10; F; Cl; Br; I; or CN.

4. The organic light emitting device according to claim 1, wherein a layer contacting with the anode in the plurality of layers is made of a metal oxide.

5. The organic light emitting device according to claim 1, wherein the anode is made of a metal thin film composed of an alloy containing an alkali metal or an alkali earth metal and silver (Ag).

6. The organic light emitting device according to claim 1, wherein the anode is made of a metal thin film composed of an alloy containing magnesium (Mg) and silver (Ag).

7. The organic light emitting device according to claim 1, wherein a light absorptance α (%) of the metal thin film satisfies Mathematical formula 1.

$$\alpha(\%)=100-(R+T)$$

Mathematical formula 1

where α is the light absorptance (%) in a wavelength band from 400 nm to 800 nm of the metal thin film, R represents a reflectance (%) of the metal thin film to a side of the plurality of layers, and T represents a transmittance (%) of the metal thin film.

8. The organic light emitting device according to claim 7, wherein the light absorptance α (%) of the metal thin film is under 40% in the wavelength region from 400 nm to 800 nm.

9. A display unit comprising a plurality of organic light emitting devices,

wherein the organic light emitting device includes:

a lamination structure that has a cathode, a plurality of layers including a light emitting layer made of an organic material, and an anode including a metal thin film in this order, in which the cathode is reflective and the anode is semi-transparent to light generated in the light emitting layer; and

a resonator structure that resonates the light generated in the light emitting layer between the cathode and the anode.

* * * * *

专利名称(译)	有机发光装置和显示单元		
公开(公告)号	US20080136318A1	公开(公告)日	2008-06-12
申请号	US11/828746	申请日	2007-07-26
[标]申请(专利权)人(译)	索尼公司		
申请(专利权)人(译)	索尼公司		
当前申请(专利权)人(译)	索尼公司		
[标]发明人	KASHIWABARA MITSUHIRO		
发明人	KASHIWABARA, MITSUHIRO		
IPC分类号	H01L27/32		
CPC分类号	H01L51/5265 H01L51/5092 H01L51/0072 C07D241/38 H01L27/3244 H01L51/0058 H01L51/006 H01L51/0081 H01L51/5088 H01L51/5206 H01L51/5221 H01L51/5253 H01L51/5271 H01L2251/558		
优先权	2006208051 2006-07-31 JP		
其他公开文献	US9093664		
外部链接	Espacenet USPTO		

摘要(译)

提供一种能够在抑制驱动电压和改善发光性能的同时改善光提取特性的有机发光器件，以及使用它的显示单元。有机发光装置包括：层压结构，其包括阴极，包括由有机材料制成的发光层的多个层，以及包括依次包括金属薄膜的阳极，其中阴极是反射性的并且阳极对发光层中产生的光是半透明的；谐振器结构使在阴极和阳极之间的发光层中产生的光谐振。

